

Collin, J. E. 1933 Five new species of Diptera.

Ent. mon. Mag. 69: 272-275, 1 pl

P. 273. ✓ Camilla fuscipes sp. n. ♂♀ Pl. III fig. 9

Differs from glabra in having coxae and femora more or less brownish, Antennae darker, especially third joint, which is black; arista with rather shorter plumes above, and shorter, more numerous hairs (in fact, not more than pubescent) beneath. Towe below eyes brownish instead of yellowish. ♂ with last apparent (fourth) abdominal tergite not longer than previous 2 together (in glabra obviously longer). Front femora with anteroventral black spine at two-fifths from top. ♂ hypopygium with larger, broader side lamellae ('c' of figs.), and shorter, more spatulate process each side of penis ('b' of figs.)

Length about 2.5 mm.

P. 274 Oxford, Swanage, Aberlady. Mr. Basden found it at the entrance of to rabbit burrows at Burnham Beeches (Bucks).

Camilla glabra Flin. is the Noterophila glabra of Verrall's 'List'; a second species (acutipennis Lw.) was added in 1911 (Ent. Mo. Mag., p. 231) and Mr. Basden has bred it from the nest of a short-tailed field mouse. The new species nigrifrons described below brings the number of British species up to four.

✓ Camilla nigrifrons sp. n. ♂♀ P. 274

Resembling acutipennis in having frons all black and coxae and femora darkened, but antennae darker, frons tibiae and tarsi pale,

2nd antennal joint brownish-black, with an indistinct yellowish patch at tip above, 3rd joint dull blackish. Frons and face black, the latter sometimes brownish at sides; jaws below eyes brown. All tibiae and tarsi yellowish; anteroventral spine on front femora about two-fifths from tip and almost as long as femur is thick. Fourth abdominal tergite of ♂ longer than second and third together.

Length scarcely 2 mm.

A pair taken by Col. J. W. Yerbury at Dartford (Kent) on July 4th, 1913, and a ♂ by myself at Woodbridge (Suffolk) on Aug. 30th, 1907.

✓ Camilla subfuscipes sp. n. ♂ ♀. Pl. ~~VII~~ fig. 10

Differing from fuscipes as follows: Antennae with basal joint yellow, 3rd joint brownish-grey, translucently yellowish, especially about base. Arista with only basal four to five hairs long, and with hairs below slightly longer than in fuscipes. Legs with coxae and femora (broadly about middle) brownish; anteroventral spine to front femora quite small and rather less than one-quarter from tip. ♂ genitalia with ~~another~~ narrower and differently shaped side lamellae ('c'), and process each side of penis ('b') longer and more even in width.

Length scarcely 2.5 mm.

Described from 1 ♂, 3 ♀♀ in Kowarz's collection. A pair from 'Asch' and single females from 'Bozan' and 'Lesonca'.  
Belgium

The four British species may be tabulated as follows :-

1 (2) Wings shorter, narrower, and may acutely pointed at tips; frons all dark, and femora extensively darkened. ... acutipennis Lw.

2 (1) Wings normal.

3 (4) Frons all dark; coxae, femora, front tibiae and tarsi darkened; 3rd antennal joint black. ... nigrifrons sp. n.

4 (3) Frons extensively yellow in front; front tibia and tarsi yellow.

5 (6) Coxae and femora brownish; antennae darker; last abdominal segment in male not longer than previous two together. ... fuscipes sp. n. (Flm.)

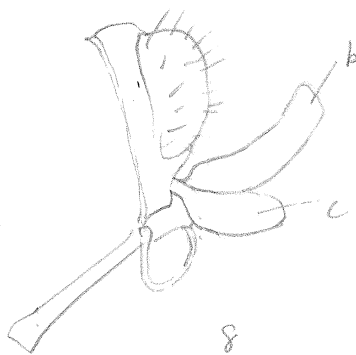
6 (5) Coxae and femora yellow; second antennal joint and base of 3rd yellowish; last abdominal segment much longer than previous two together. ... glabra (Flm.)

Plate VII figs

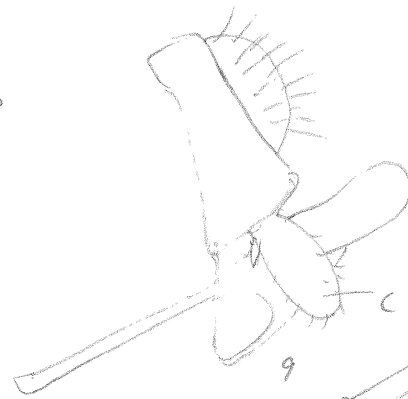


Camilla glabra ♂

satulrifrons behind



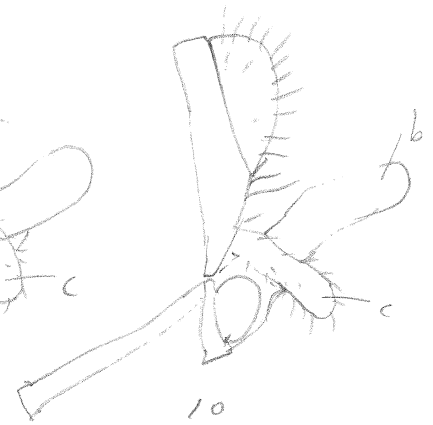
C. glabra ♂



C. fuscipes n.sp.n.

♂

♂ genitalia in profile



C. subfuscipes n.sp.n. ♂