

Systematic Study of Drosophilidae in Poona and Neighbouring Areas—II

By

V. G. Vaidya and N. N. Godbole

(Received on 30-9-71)

Nine species belonging to subgenera *Sophophora* and *Drosophila* of genus *Drosophila* have already been reported from Poona and neighbouring areas¹. A species of subgenus *Scaptodrosophila* of this genus is here added to the record of Drosophilidae of this area.

Genus *Drosophila* Fallén, 1823

Subgenus *Scaptodrosophila* Duda, 1923

✓ X. *Drosophila* (*Scaptodrosophila*) *paratriangulata*, Gupta and Ray-Chaudhuri, 1970.

Drosophila (*Scaptodrosophila*) *paratriangulata* : Gupta, J. P. and Ray-Chaudhuri S. P. 1970. *Proc. R. ent. Soc. Lond. (B)* 39 : 57. 67

Description of male imago :

General features and Head : Body about 1.7 mm in length. Eyes red, Middle orbital bristle about $\frac{1}{2}$ the length of the other two. Antenna yellow. third segment darker and pubescent. Arista with about 5 dorsal and 3 ventral rays including terminal fork. Carina narrow, high. Palpus with 2 prominent bristles. Second oral bristle about $\frac{1}{2}$ the first.

Thorax : Thorax yellow, unicolourous. Brownish stripe on thoracic pleura. Acrostichal hairs in 8 rows. Prescutellars present. Sterno-index about 0.65.

Legs : Legs yellowish. Preapicals on all three tibiae and apicals on first and second.

Wings : Wings clear, about 1.55 mm in length. Costal index about 1.57. 4th vein index about 2.58. 4C-index about 1.58. 5 X-index about 2.54. C-1 bristles 2. C-3 bristles on basal $\frac{3}{4}$.

Abdomen : Abdomen yellowish, with broad, medially interrupted brownish bands on the posterior margins of second to fifth abdominal tergites. Sixth tergite totally black.

Periphallidic organs : Genital arch pale yellow, pubescent, with 2 bristles on its dorsal half and about 11 bristles on its ventral half. Heel roundish, Toe absent. Anal plate not fused with genital arch, roughly oval, pubescent, with many long bristles and with a narrow truncate lower tip. Clasper one, with about 12 primary teeth arranged in a concave row and about 7 marginal bristles.

Phallic organs : Phallic organs pale yellow. Aedeagus bifid and pointed apically. Apodeme of aedeagus long and expanded apically. Anterior parameres large, with about 3 sensillae. Ventral fragma roughly quadrate. Novasternum pubescent, with a well developed median projection and lateral process. Two long submedian spines. Phallosomal index about 0.5.

Reference

1. Vaidya, V. G. and Godbole, N. N. *J. Univ. of Poona*, No. 40, 49-61, 1971.

Department of Zoology,
University of Poona,
Poona-7 (India).

Systematic Study of Drosophilidae in Poona and Neighbouring Areas—II

By

V. G. Vaidya and N. N. Godbole

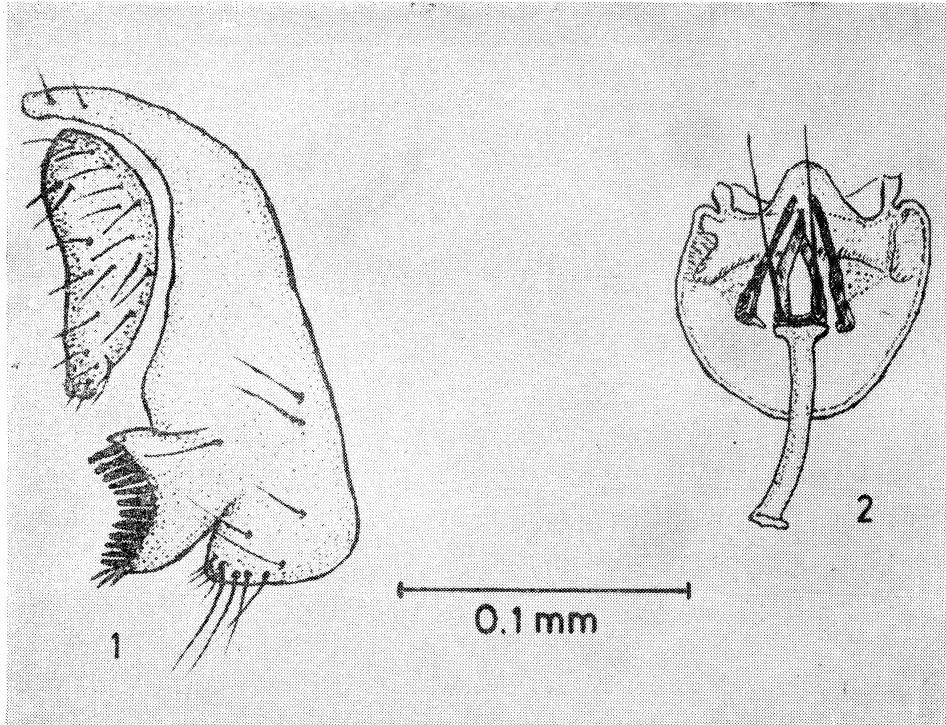


Plate I (Figs. 1 & 2) *D. paratriangulata*

1. Periphallic organs
2. Phallic organs