

# DGRC, Kyoto Stock Center, Kyoto Institute of Technology

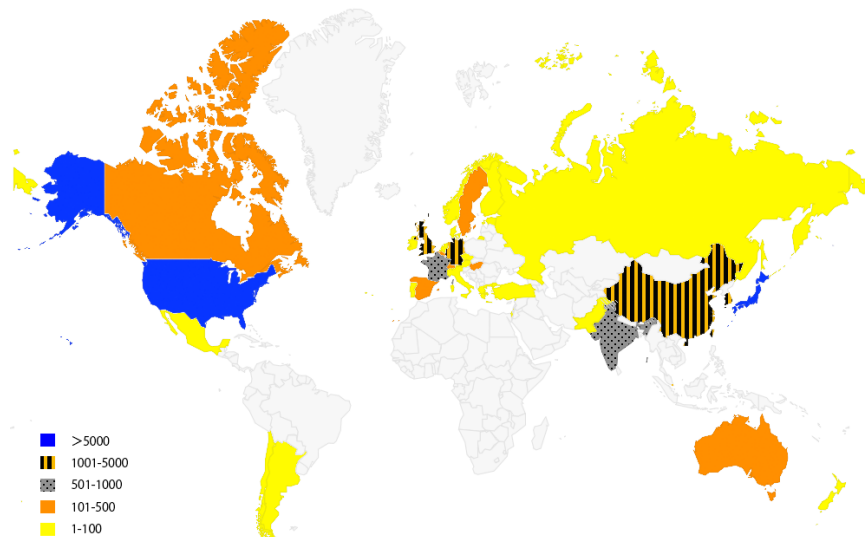
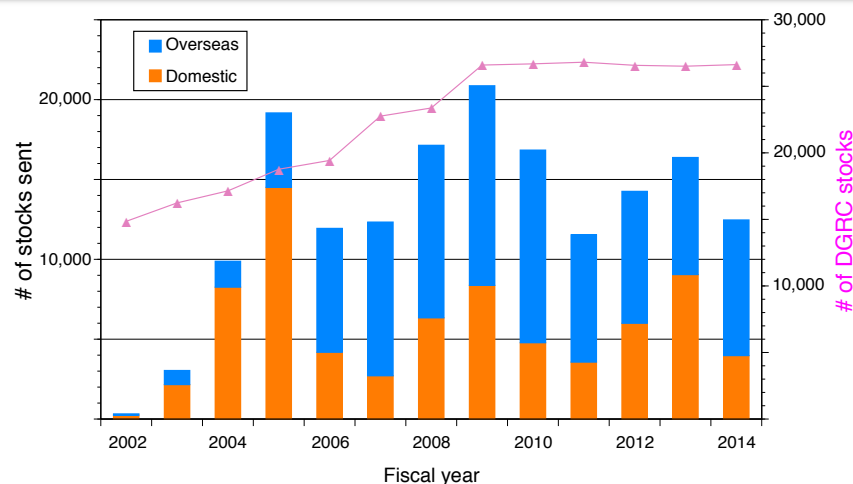


Takano, T.<sup>1)</sup>, Tomaru, M.<sup>1)</sup>, Ohsako, T.<sup>2)</sup>, Karr, T. L.<sup>1)</sup>, and Itoh, M.<sup>3)</sup>

1) Drosophila Genetic Resource Center, Kyoto Institute of Technology, Japan; 2) Advanced Technology Center, Kyoto Institute of Technology, Japan; 3) Department of Applied Biology, Kyoto Institute of Technology, Japan

**DGRC staff:** Besides three faculties and a technical official, 21 stock keeping, 6 technical, & 2 administration staff support DGRC.

**DGRC statistics:** We have shipped 43,100 stocks from 26,631 available stocks (as of March 31, 2015) in 2012-2014 fiscal years. Stock requests have come from 38 countries, more than 1,100 total principal investigators. Five Asian countries including China are among the top 10 in the total number of stocks requested in the last three years.

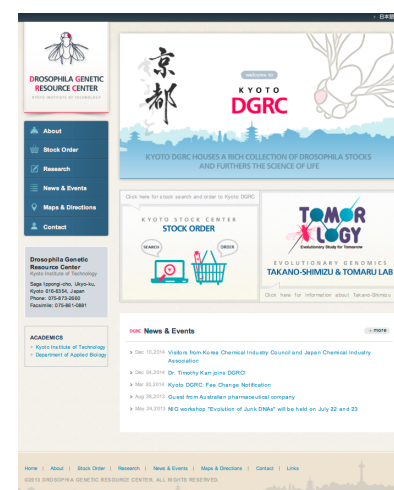


Total number of stock ordered per country in 2012-2014 fiscal years

### Top 10 DGRC users by # of stocks requested

Japan	19,040
USA	5,764
China	4,908
Taiwan	3,975
United Kingdom	1,621
Germany	1,499
Singapore	1,265
South Korea	1,029
France	847
India	603

(Apr 2012 ~ Mar 2015)



**New Collections:** Dr. S. M. Cohen at Institute of Molecular and Cell Biology, Singapore, donated 91 microRNA mutants (affected 124 genes; Chen *et al.* 2014 Systematic study of Drosophila microRNA functions using a collection of targeted knockout mutations. *Developmental Cell* 31, 784–800) and 167 inducible microRNA transgene-carrying stocks (137 genes; Szuplewski *et al.* 2012 MicroRNA transgene overexpression complements deficiency-based modifier screens in *Drosophila*. *Genetics* 190, 617–626). They will be open to the public soon.

Drs. S. Yamamoto and H. J. Bellen at Baylor College of Medicine, Houston, are making a deposition of ~1,400 X-linked chemically induced lethal mutations for mosaic analysis (Yamamoto *et al.* 2014 A *Drosophila* genetic resource of mutants to study mechanisms underlying human genetic diseases. *Cell* 159, 200-214). Many of them are exclusive to DGRC.

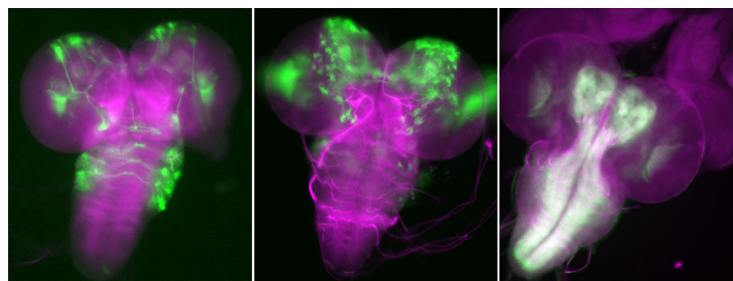
In sum, we have been given 1,465 stocks from fly researchers in the last three years.

### Future resource, new expression drivers:

A couple hundreds of GAL4 expression drivers will come soon.

### Providing original paper information with fly stocks:

In 2015, we launched a service to provide reference information along with your ordered fly stocks; therefore, users cannot miss important papers of the original providers.



**High-maintenance of the KYOTO quality:** In the past three years, Technical Support Team (Ohsako and 5 technical staff) has been inspecting 10,490 stocks for quality control. They found genotype-phenotype inconsistencies in 861 stocks, of which 637 were rescued. No mite was found in all stocks examined.

**Improving our database:** We are making an effort to update the database and to develop new predefined data sets such as “Young genes” (please visit <http://kyotofly.kit.jp/cgi-bin/stocks/index.cgi>).

### For potential stock providers:

Please look at [http://kyotofly.kit.jp/stocks/documents/AcquisitionPolicy\\_E.html](http://kyotofly.kit.jp/stocks/documents/AcquisitionPolicy_E.html) for Acquisition policy and [http://kyotofly.kit.jp/stocks/documents/HowToDonateStocks\\_E.html](http://kyotofly.kit.jp/stocks/documents/HowToDonateStocks_E.html) for How to donate Drosophila stocks to Kyoto DGRC.